

Single universal joint



UA

For hand operation

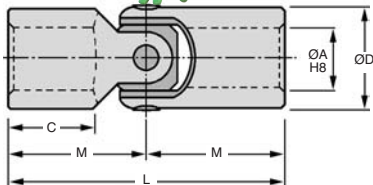
- Conforms to DIN 7551-E (size 13) or DIN 808-E (sizes 16 to 32)
- Light duty applications
- Manual operation or infrequent use
- Misalignment angle 35°
- Material: untreated steel 95MnPb28



Economy range

Uses

- Stress valve
- Valve drive
- Blinds



DISCOUNTS

Qty.	1+	5+	10+	25+	50+
Disc.	List	-6%	-12%	-18%	On request

Part number	ØD	Bore ØA	C	M	L	Max. speed (rpm)	Backlash Nm (min)	Stock*	Price each 1 to 4
U813A	13	8,0	11,0	21,0	42	200	-	✓	13,26 €
U816A	16	10,0	15,0	26,0	52	200	0,2 45'	✓	13,26 €
U820A	20	12,0	18,0	31,0	62	200	0,4 40'	✓	15,20 €
U825A	25	16,0	22,0	37,0	74	200	1,0 32'	✓	20,39 €
U832A	32	20,0	25,0	43,0	86	200	1,7 28'	✓	35,78 €

*Depending on availability

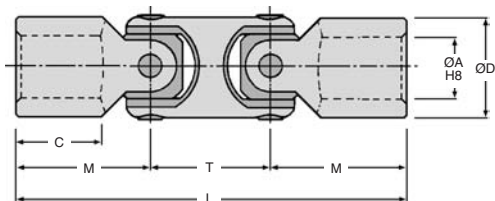
- Conforms to DIN 7551-E (size 13) or DIN 808-E (sizes 16 to 40)
- Light duty applications
- Manual operation or infrequent use
- Misalignment angle 70°
- Material: treated steel 9SMnPb28



Economy range

Uses

- Stress valve
- Valve drive
- Blinds



DISCOUNTS

Qty.	1+	5+	10+	25+	50+
Disc.	List	-6%	-12%	-18%	On request

Part number	ØD	Bore ØA	C	M	T	L	Max. speed (rpm)	Backlash		Stock*	Price each 1 to 4
								Nm	(min)		
U813C	13	8	11	21	18	60	200	-	-	✓	22,37 €
U816C	16	10	15	26	22	74	200	0,2	1°30'	✓	21,44 €
U820C	20	12	18	31	26	88	200	0,4	1°20'	✓	26,03 €
U825C	25	16	22	37	30	104	200	1,0	1°04'	✓	43,21 €
U832C	32	20	25	43	37	123	200	1,7	0°56'	✓	53,64 €

*Depending on availability

Rubber cover for universal joints



U8R

For use with U816 - U832

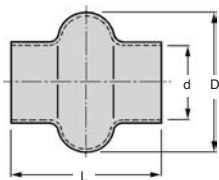
- Increases length of life of universal joints

- Material: synthetic rubber
- PVC Shore A 1,18g/cm²
- Electrical resistance $8 \times 10^9 \Omega\text{cm}$
- Working temperature:
Continuous -27°C to +70°C
Occasional -32°C to +120°C

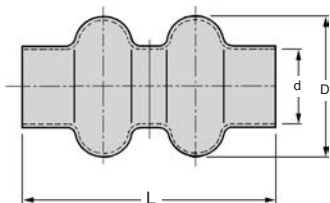


Advantages

- Oil-resistant
- Good elasticity



For single joint



For double joint

DISCOUNTS

Qty.	1+	5+	10+	25+	50+
Disc.	Prix	-6%	-12%	-18%	On request

Part number	For joint	d	L	D	Stock*	Price each 1 to 4
For single joint						
U8R-02	U816A	16	32	35	-	9,87 €
U8R-04	U820A	20	40	36	✓	14,41 €
U8R-1	U825A	24	45	44	✓	10,79 €
U8R-3	U832A	32	55	62	✓	13,13 €
For double joint						
U8R-19	U816C	16	55	35	-	17,40 €
U8R-20	U820C	20	65	36	✓	19,03 €
U8R-21	U825C	24	70	44	✓	22,04 €
U8R-23	U832C	32	90	62	-	26,33 €

*Depending on availability

UNIVERSAL JOINTS *made to measure*



Contact-us

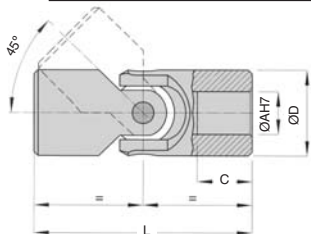
modified to drawings
or samples...

Tel. +33(0)4 37 496 496
www.hpceurope.com

Custom made parts section

G Industrial range

- **Standard series in accordance with DIN 808-7551**
- **With hardened bushes**
- Suitable for speeds up to 800 rpm
- Max. misalignment angle 45°
- Materials:
 - Body: C45 steel
 - Pin: Hardened steel 18NCD4



Accessories

- Optional rubber cover

modifiable bore-size



Angle Factor

5°	1,25
10°	1,00
20°	0,75
30°	0,45
40°	0,30

Effect of operating angle

The torques below are given for a 10° angle. For other angles, the appropriate factor from this table should be applied.

E.g. For 100Nm to be transmitted at 20°, the corrected value of torque becomes 100/0.75 = 133 Nm and a joint should be chosen that can transmit 133Nm at the required speed.

DISCOUNTS

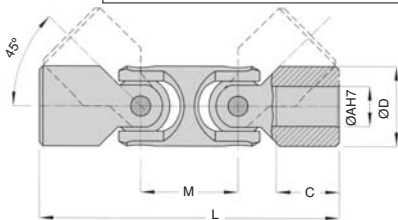
Qty.	1+	5+	10+	25+
Disc.	List	-6%	-12%	On request

Part number	ØD	ØA	C	L	Torque (Nm)								Stock*	Price each 1 to 4
					at 100 rpm	at 200 rpm	at 300 rpm	at 400 rpm	at 500 rpm	at 700 rpm	at 800 rpm			
G01-A-6/6	16	6	9	34	-	-	-	-	-	-	-	-	✓	23,54 €
G02-A-8/8	16	8	11	40	-	-	-	-	-	-	-	-	✓	23,54 €
G03-A-10/10	22	10	10	45	25,0	17	14,5	13,0	12,0	11,0	7,5	✓	24,45 €	
G04-A-12/12	25	12	11	50	43,0	25	20,5	17,0	15,5	13,0	12,0	✓	26,69 €	
G05-A-14/14	29	14	13	56	68,5	43	39,5	36,0	33,5	28,5	26,5	✓	28,37 €	
G1-A-16/16	32	16	15	65	86,5	84	72,0	57,5	51,5	41,0	36,0	✓	29,31 €	
G2-A-18/18	37	18	17	72	156,0	120	96,0	72,0	60,0	48,0	-	✓	34,01 €	
G3-A-20/20	40	20	19	82	240,0	168	120,0	96,0	84,0	60,0	-	✓	40,20 €	
G4-A-22/22	47	22	22	95	300,0	192	144,0	120,0	96,0	72,0	-	✓	48,26 €	
G5-A-25/25	50	25	26	108	384,0	240	168,0	144,0	120,0	96,0	-	✓	56,88 €	
G6-A-30/30	58	30	30	122	432,0	264	192,0	156,0	132,0	-	-	✓	72,80 €	
G61-A-32/32	63	32	30	130	-	-	-	-	-	-	-	-	✓	72,80 €
G7-A-35/35	70	35	35	140	456,0	300	228,0	174,0	144,0	-	-	✓	125,34 €	
G8-A-40/40	80	40	42	160	504,0	336	264,0	216,0	-	-	-	-	✓	191,34 €
G9-A-50/50	95	50	54	190	720,0	480	336,0	264,0	-	-	-	-	✓	245,25 €

*Depending on availability



- Standard series in accordance with DIN 808-7551
- With hardened bushes
- Suitable for speeds up to 800 rpm
- Max. misalignment angle 45°
- Materials:
 - Body: C45 steel
 - Pin: Hardened steel 18NCD4



Accessories

- Optional rubber cover

modifiable bore-size



Angle	Factor
5°	1,25
10°	1,00
20°	0,75
30°	0,45
40°	0,30

Effect of operating angle

The torques below are given for a 10° angle. For other angles, the appropriate factor from this table should be applied. **E.g.** For 100Nm to be transmitted at 20°, the corrected value of torque becomes $100/0.75 = 133 \text{ Nm}$ and a joint should be chosen that can transmit 133Nm at the required speed.

DISCOUNTS

Qty.	1+	5+	10+	25+
Disc.	List	-6%	-12%	On request

Part number	ØD	ØA	C	M	L	Torque (Nm)								Stock*	Price each 1 to 4
						at 100 rpm	at 200 rpm	at 300 rpm	at 400 rpm	at 500 rpm	at 700 rpm	at 800 rpm			
GD01-A-6/6	16	6	-	27	61	-	-	-	-	-	-	-	-	✓	47,12 €
GD02-A-8/8	16	8	-	27	67	-	-	-	-	-	-	-	-	✓	47,12 €
GD03-A-10/10	20	10	-	30	75	23	15	13	12	11	10	7	✓	49,44 €	
GD04-A-12/12	22	12	11	29	74	39	23	18	15	14	12	11	✓	49,44 €	
GD05-A-14/14	25	14	13	33	85	62	39	36	32	30	26	24	✓	55,41 €	
GD1-A-16/16	29	16	19	35	100	78	76	65	52	46	37	32	✓	59,15 €	
GD2-A-18/18	32	18	20	39	112	140	108	86	65	54	43	-	✓	71,32 €	
GD3-A-20/20	40	20	19	46	128	216	151	108	86	76	54	-	✓	78,74 €	
GD4-A-22/22	40	22	25	48	145	270	173	130	108	86	65	-	-	105,60 €	
GD5-A-25/25	50	25	24	59	163	346	216	151	130	108	86	-	✓	129,08 €	
GD6-A-30/30	58	30	28	66	182	389	238	173	140	119	-	-	-	153,32 €	
GD61-A-32/32	63	32	30	84	198	-	-	-	-	-	-	-	-	153,32 €	
GD7-A-35/35	70	35	32	78	212	410	270	205	157	130	-	-	-	281,85 €	
GD8-A-40/40	80	40	38	95	245	454	302	238	194	-	-	-	-	441,07 €	
GD9-A-50/50	95	50	50	120	290	648	432	302	238	-	-	-	-	612,34 €	

* Depending on availability

Single **needle** roller universal joint

H Industrial range

- **Standard series**
- **Needle bearings**
- Suitable for speeds up to 4000 rpm
- Max. misalignment angle 45°
- **Materials:**
 - Body: C45 steel
 - Pin: Hardened steel 18NCD4

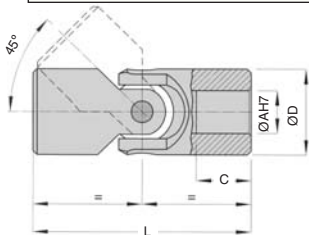
Uses

- High speed applications

Accessories

- Optional rubber cover

modifiable bore-size



Angle	Factor
5°	1,25
10°	1,00
20°	0,75
30°	0,45
40°	0,30

Effect of operating angle

The torques below are given for a 10° angle. For other angles, the appropriate factor from this table should be applied. E.g. For 100Nm to be transmitted at 20°, the corrected value of torque becomes $100/0.75 = 133$ Nm and a joint should be chosen that can transmit 133Nm at the required speed.

DISCOUNTS

Qty.	1+	5+	10+	25+
Disc.	List	-6%	-12%	On request

Part number	ØD	ØA	C	L	Torque (Nm)						Stock†	Price each 1 to 4
					at 250 rpm	at 500 rpm	at 1000 rpm	at 2000 rpm	at 3000 rpm	at 4000 rpm		
H02-A-8/8	16	8	15	52	-	-	-	5,8	-	-	✓	44,68 €
H03-A-10/10	20	10	18	62	22	17	14	11,0	10	9	✓	40,20 €
H05-A-14/14	25	14	20	74	34	29	24	22,0	20	18	✓	40,20 €
H1-A-16/16	32	16	24	86	65	55	45	40,0	37	32	✓	44,68 €
H2-A-18/18	37	18	17	72	75	61	50	45,0	40	36	-	47,03 €
H3-A-20/20	40	20	30	108	140	120	100	80,0	70	65	✓	53,63 €
H4-A-22/22	47	22	22	95	162	132	108	88,0	77	71	-	62,40 €
H5-A-25/25	50	25	38	132	200	170	130	110,0	90	85	✓	69,25 €
H6-A-30/30	63	30	45	166	300	270	230	190,0	160	140	-	89,17 €
H61-A-32/32	63	32	45	166	-	-	-	-	-	-	-	89,17 €
H7-A-35/35	70	35	35	140	326	277	237	198,0	168	-	-	161,36 €
H8-A-40/40	80	40	50	180	365	303	255	205,0	186	-	-	222,14 €
H9-A-50/50	95	50	54	190	402	335	275	225,0	198	-	-	311,29 €

*Depending on availability



- **Standard series**
- **Needle bearings**
- Suitable for speeds up to 4000 rpm
- Max. misalignment angle 45°
- **Materials:**
 - Body: C45 steel
 - Pin: Hardened steel 18NCD4



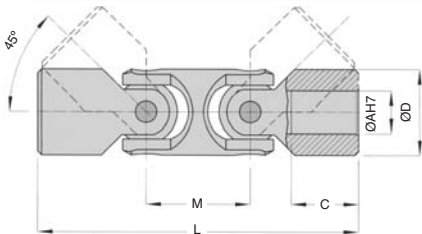
Uses

- High speed applications

Accessories

- Optional rubber cover

modifiable bore-size



Angle Factor

Angle	Factor
5°	1,25
10°	1,00
20°	0,75
30°	0,45
40°	0,30

Effect of operating angle

The torques below are given for a 10° angle. For other angles, the appropriate factor from this table should be applied. E.g. For 100Nm to be transmitted at 20°, the corrected value of torque becomes $100/0.75 = 133 \text{ Nm}$ and a joint should be chosen that can transmit 133Nm at the required speed.

DISCOUNTS

Qty.	1+	5+	10+	25+
Disc.	List	-6%	-12%	On request

Part number	ØD	ØA	C	M	L	Torque (Nm)						Price each 1 to 4
						at 250 rpm	at 500 rpm	at 1000 rpm	at 2000 rpm	at 3000 rpm	at 4000 rpm	
HD03-A-10/10	20	10	18	26	88	19.8	15.3	12.6	9.9	9.0	8.1	120.67 €
HD05-A-14/14	25	14	19	33	104	30.6	26.1	21.6	19.8	18.0	16.2	94.67 €
HD1-A-16/16	32	16	24	39	125	58.5	49.5	40.5	36.0	33.3	28.8	94.67 €
HD3-A-20/20	40	20	30	48	156	126.0	108.0	90.0	72.0	63.0	58.5	127.72 €
HD5-A-25/25	50	25	37	59	188	180.0	153.0	117.0	99.0	81.0	76.5	152.08 €
HD6-A-30/30	63	30	41	80	238	270.0	243.0	207.0	171.0	144.0	126.0	171.77 €
HD61-A-32/32	63	32	41	80	238	-	-	-	-	-	-	171.77 €
HD7-A-35/35	70	35	30	78	212	293.4	249.3	213.3	178.2	151.2	-	341.82 €
HD8-A-40/40	80	40	48	120	290	328.5	272.7	229.5	184.5	167.4	-	551.33 €
HD9-A-50/50	95	50	50	120	290	361.8	301.5	247.5	202.5	178.2	-	643.17 €

G-AR

Quick release yokes

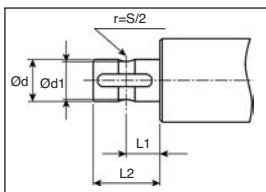
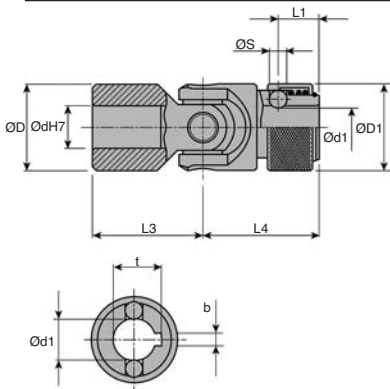
- **Hardened bush**
- Max. angle of misalignment 45°
- **Materials:**
Body: C45 steel
Pin: Hardened steel 18NCD4

Torque

- For transmissible torques, refer to G range

Info.

- Machining of shaft to be carried out by customer



Shaft machining

DISCOUNTS

Qty.	1+	5+	10+	25+
Disc.	List	-6%	-12%	On request

Part number	ØD	ØdH7	Ød1	ØD1	L1	L2	L3	L4	ØS	b	t	Price each 1 to 4
G03-AR-10/10	22	10	8,7	22	11,5	17	22,5	31	4,0	3	11,2	49,59 €
G04-AR-12/12	25	12	11,0	26	13,5	21	25,0	37	4,0	4	13,3	51,88 €
G05-AR-14/14	29	14	13,0	29	13,5	21	28,0	37	4,0	5	15,3	53,60 €
G1-AR-16/16	32	16	14,8	32	14,0	25	32,5	43	6,3	5	17,3	56,39 €
G2-AR-18/18	37	18	16,0	37	19,0	33	36,0	50	8,0	6	19,8	61,20 €
G3-AR-20/20	40	20	18,0	40	19,0	33	41,0	54	8,0	6	21,8	69,16 €
G4-AR-22/22	47	22	20,0	47	20,5	38	47,5	60	10,0	6	23,8	78,28 €
G5-AR-25/25	50	25	23,0	50	20,5	38	54,0	66	10,0	8	26,8	98,90 €
G6-AR-30/30	58	30	28,0	58	25,0	50	61,0	83	10,0	8	32,2	123,29 €



Single needle roller universal joint

Quick release yokes

H-AR

- Needle bearings
- Max. angle of misalignment 45°
- Materials:
 - Body: C45 steel
 - Pin: Hardened steel 18NCD4

Uses

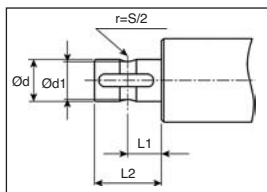
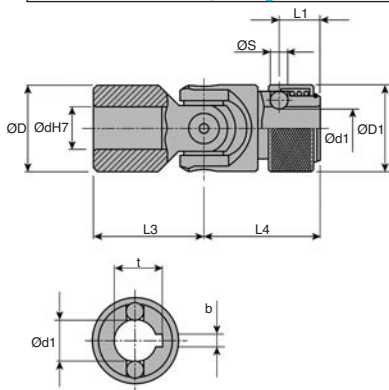
- High speeds of rotation

Torque

- For transmissible torques, refer to G range

Info.

- Machining of shaft to be carried out by customer



Shaft machining

DISCOUNTS

Qty.	1+	5+	10+	25+
Disc.	List	-6%	-12%	On request

Part number	ØD	ØdH7	Ød1	ØD1	L1	L2	L3	L4	ØS	b	t	Price each 1 to 4
H02-AR-8/8	16	8	6,3	16,0	9,5	15	26,0	26	4,0	2	9,0	67,93 €
H03-AR-10/10	20	10	8,7	22,0	11,5	18	31,0	31	4,0	3	11,2	63,60 €
H05-AR-14/14	25	14	13,0	26,5	13,5	21	37,0	37	4,0	5	15,3	63,60 €
H1-AR-16/16	32	16	14,8	32,5	14,0	25	43,0	43	6,3	5	17,3	69,79 €
H2-AR-18/18	37	18	16,0	37,0	19,0	33	36,0	50	8,0	6	19,8	72,09 €
H3-AR-20/20	40	20	18,0	40,5	19,0	33	54,0	54	8,0	6	21,8	80,19 €
H4-AR-22/22	47	22	20,0	47,0	20,5	38	47,5	60	10,0	6	23,8	89,56 €
H5-AR-25/25	50	25	23,0	50,5	20,5	38	66,0	66	10,0	8	26,8	108,06 €
H6-AR-30/30	63	30	28,0	63,5	25,0	50	83,0	83	10,0	8	32,2	135,57 €

- Stainless steel range
- Plain pins and bushes
- Suitable for speeds up to 800 rpm
- Max. angle of misalignment 45°
- Material: Stainless steel X5CrNi1810

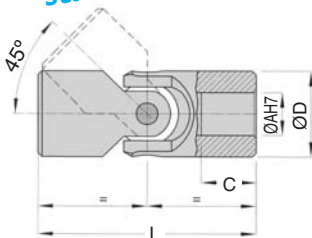
Uses

- Food and pharmaceutical industries

Accessories

- Optional rubber cover

modifiable bore-size



Angle Factor

Angle	Factor
5°	1,25
10°	1,00
20°	0,75
30°	0,45
40°	0,30

Effect of operating angle

The torques below are given for a 10° angle. For other angles, the appropriate factor from this table should be applied. E.g. For 10Nm to be transmitted at 20°, the corrected value of torque becomes $10/0.75 = 13.3$ Nm and a joint should be chosen that can transmit 13.3Nm at the required speed.

DISCOUNTS

Qty.	1+	5+	10+	25+	50+
Disc.	List	-6%	-12%	-18%	On request

Part number	ØD	ØA	C	L	Torque (Nm)								Stock*	Price each 1 to 4
					at 100 rpm	at 200 rpm	at 300 rpm	at 400 rpm	at 500 rpm	at 700 rpm	at 800 rpm			
JCS00/SS	10	5	15	44	3.6	3.3	2.8	2.5	2.3	-	-	✓	37.44 €	
JCS01/SS	13	6	18	50	4.4	4.4	3.5	3.2	2.9	-	-	✓	34.31 €	
JCS02/SS	16	8	19	58	8.6	6.0	5.3	4.6	4.0	3.4	3.1	✓	34.31 €	
JCS03/SS	22	10	25	76	12.3	8.3	7.0	6.4	5.8	5.2	3.5	✓	34.31 €	
JCS04/SS	25	12	29	86	21.0	12.6	10.0	8.0	7.3	6.3	5.8	✓	38.99 €	
JCS05/SS	29	14	30	90	33.0	21.3	19.3	17.6	16.3	13.3	12.6	✓	40.56 €	
JCS06/SS	32	16	30	95	45.0	42.0	35.3	28.0	25.3	20.0	17.3	✓	42.11 €	
JCS07/SS	37	18	35	108	76.0	60.0	46.6	35.3	29.3	23.3	-	-	49.92 €	
JCS08/SS	40	20	32	108	117.0	84.0	58.6	46.6	41.3	29.3	-	✓	54.59 €	
JCS09/SS	47	22	38	127	146.0	96.0	70.0	58.6	46.6	35.3	-	-	68.66 €	
JCS10/SS	50	25	44	140	192.0	120.0	84.0	72.0	60.0	48.0	-	✓	81.16 €	
JCS11/SS	58	30	58	178	216.0	132.0	96.0	78.0	66.0	-	-	✓	106.14 €	

*Depending on availability

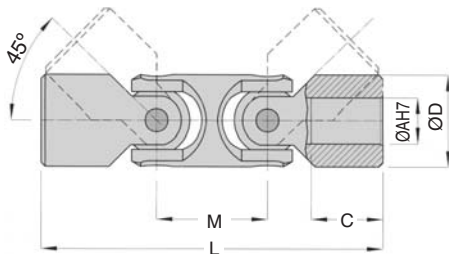
- **Stainless steel range**
- **Plain pins and bushes**
- Suitable for speeds up to 800 rpm
- Max. angle of misalignment 90°
- Material: Stainless steel X5CrNi1810

Uses

- Food and pharmaceutical industries

Accessories

- Optional rubber cover



modifiable bore-size



Effect of operating angle

The torques below are given for a 10° angle. For other angles, the appropriate factor from this table should be applied. E.g. For 10Nm to be transmitted at 20°, the corrected value of torque becomes $10/0.75 = 13.3$ Nm and a joint should be chosen that can transmit 13.3Nm at the required speed.

Angle	Factor
5°	1,25
10°	1,00
20°	0,75
30°	0,45
40°	0,30

DISCOUNTS

Qty.	1+	5+	10+	25+	50+
Disc.	List	-6%	-12%	-18%	On request

Part number	ØD	ØA	C	M	L	Torque (Nm)								Price each 1 to 4
						at 100 rpm	at 200 rpm	at 300 rpm	at 400 rpm	at 500 rpm	at 700 rpm	at 800 rpm	Stock*	
JCD04/SS	22	12	25	29	105	18,9	11,34	9,00	7,20	6,57	5,67	5,22	✓	78,02 €
JCD05/SS	25	14	29	33	119	29,7	19,17	17,37	15,84	14,67	11,97	11,34	-	81,16 €
JCD06/SS	29	16	30	35	125	40,5	37,80	31,77	25,20	22,77	18,00	15,57	-	84,26 €
JCD07/SS	32	18	30	39	134	68,4	54,00	41,94	31,77	26,37	20,97	-	-	99,88 €
JCD08/SS	40	20	32	46	154	105,3	75,60	52,74	41,94	37,17	26,37	-	✓	109,23 €
JCD09/SS	40	22	38	46	173	131,4	86,40	63,00	52,74	41,94	31,77	-	-	137,35 €
JCD10/SS	50	25	44	59	199	172,8	108,00	75,60	64,80	54,00	43,20	-	-	162,34 €
JCD11/SS	58	30	58	66	244	194,4	118,80	86,40	70,20	59,40	-	-	-	212,28 €

* Depending on availability

Telescopic universal joint



CT

Industrial range

- **Standard series**
- **With hardened bushes**
- Suitable for speeds up to 800 rpm
- Max. angle of misalignment 45°
- **Materials:**

Body: C45 steel

Pin: Hardened steel 18NCD4

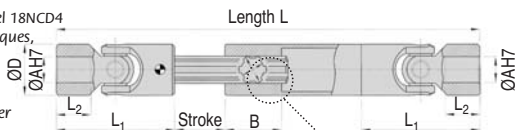
- For transmissible torques, refer to GD range

Accessories

- Optional rubber cover

Options

- Stainless steel version on request



modifiable bore-size



DISCOUNTS

Qty.	1+	5+	10+	25+
Disc.	List	-6%	-12%	On request

Note:
Splined shaft to be cut to length by customer

Part number	L		ØA H7	ØD	L1	L2	B	Stroke	E	F	Stock*	Price each 1 to 4
	min/max											
CT10-130/150	130/150	10	22	45	10	40	20	11	14	✓	136,05 €	
CT10-140/170	140/170	10	22	45	10	40	30	11	14	✓	136,05 €	
CT10-160/200	160/200	10	22	45	10	40	40	11	14	✓	136,05 €	
CT10-170/230	170/230	10	22	45	10	40	60	11	14	-	136,05 €	
CT10-180/240	180/240	10	22	45	10	40	60	11	14	-	136,05 €	
CT10-230/330	230/330	10	22	45	10	40	100	11	14	✓	136,05 €	
CT12-140/170	140/170	12	25	50	11	45	30	13	16	✓	143,74 €	
CT12-160/200	160/200	12	25	50	11	45	40	13	16	-	143,74 €	
CT12-180/225	180/225	12	25	50	11	45	45	13	16	✓	143,74 €	
CT12-200/270	200/270	12	25	50	11	45	70	13	16	✓	143,74 €	
CT12-220/300	220/300	12	25	50	11	45	80	13	16	✓	143,74 €	
CT12-250/355	250/355	12	25	50	11	45	105	13	16	-	143,74 €	
CT12-280/420	280/420	12	25	50	11	45	140	13	16	✓	143,74 €	
CT12-300/450	300/450	12	25	50	11	45	150	13	16	✓	143,74 €	
CT14-160/190	160/190	14	29	56	13	45	30	13	16	-	148,33 €	
CT14-170/200	170/200	14	29	56	13	45	30	13	16	-	148,33 €	
CT14-180/220	180/220	14	29	56	13	45	40	13	16	-	148,33 €	
CT14-210/280	210/280	14	29	56	13	45	70	13	16	-	148,33 €	
CT14-220/300	220/300	14	29	56	13	45	80	13	16	-	148,33 €	
CT14-250/350	250/350	14	29	56	13	45	100	13	16	✓	148,33 €	
CT14-280/420	280/420	14	29	56	13	45	140	13	16	-	148,33 €	
CT14-300/450	300/450	14	29	56	13	45	150	13	16	-	148,33 €	
CT14-350/550	350/550	14	29	56	13	45	200	13	16	-	148,33 €	
CT14-400/650	400/650	14	29	56	13	45	250	13	16	✓	148,33 €	

*Depending on availability

Part number	L		ØA H7	ØD	L1	L2	B	Stroke	E	F	Stock	Price
	min/max											each
CT16-180/210	180/210	16	32	65	15	45	30	16	20	20	-	152,82 €
CT16-190/220	190/220	16	32	65	15	45	30	16	20	20	-	152,82 €
CT16-210/250	210/250	16	32	65	15	45	40	16	20	20	-	152,82 €
CT16-240/320	240/320	16	32	65	15	45	80	16	20	20	-	152,82 €
CT16-250/350	250/350	16	32	65	15	45	100	16	20	20	✓	152,82 €
CT16-275/390	275/390	16	32	65	15	45	115	16	20	20	-	152,82 €
CT16-300/430	300/430	16	32	65	15	45	130	16	20	20	-	152,82 €
CT16-380/590	380/590	16	32	65	15	45	210	16	20	20	-	157,10 €
CT16-400/630	400/630	16	32	65	15	45	230	16	20	20	✓	161,36 €
CT18-195/225	195/225	18	37	72	17	45	30	16	20	20	-	171,69 €
CT18-230/280	230/280	18	37	72	17	45	50	16	20	20	-	171,69 €
CT18-250/320	250/320	18	37	72	17	45	70	16	20	20	-	171,69 €
CT18-270/370	270/370	18	37	72	17	45	100	16	20	20	-	171,69 €
CT18-290/400	290/400	18	37	72	17	45	110	16	20	20	-	171,69 €
CT18-300/415	300/415	18	37	72	17	45	115	16	20	20	-	171,69 €
CT18-400/620	400/620	18	37	72	17	45	220	16	20	20	-	180,22 €
CT18-500/820	500/820	18	37	72	17	45	320	16	20	20	-	188,73 €
CT20-220/250	220/250	20	40	82	19	45	30	18	22	22	✓	175,43 €
CT20-250/300	250/300	20	40	82	19	45	50	18	22	22	-	175,43 €
CT20-270/340	270/340	20	40	82	19	45	70	18	22	22	-	175,43 €
CT20-290/380	290/380	20	40	82	19	45	90	18	22	22	-	175,43 €
CT20-320/440	320/440	20	40	82	19	45	120	18	22	22	-	175,43 €
CT20-380/560	380/560	20	40	82	19	45	180	18	22	22	✓	179,71 €
CT20-420/640	420/640	20	40	82	19	45	220	18	22	22	-	183,97 €
CT20-500/800	500/800	20	40	82	19	45	300	18	22	22	✓	188,23 €
CT22-250/280	250/280	22	47	95	22	48	30	21	25	25	-	222,67 €
CT22-270/320	270/320	22	47	95	22	48	50	21	25	25	-	222,67 €
CT22-290/350	290/350	22	47	95	22	48	60	21	25	25	-	222,67 €
CT22-330/430	330/430	22	47	95	22	48	100	21	25	25	-	222,67 €
CT22-350/470	350/470	22	47	95	22	48	120	21	25	25	-	222,67 €
CT22-470/710	470/710	22	47	95	22	48	240	21	25	25	-	235,44 €
CT25-270/320	270/320	25	50	108	26	48	50	23	28	28	-	251,57 €
CT25-295/350	295/350	25	50	108	26	48	55	23	28	28	-	251,57 €
CT25-310/375	310/375	25	50	108	26	48	65	23	28	28	-	251,57 €
CT25-350/450	350/450	25	50	108	26	48	100	23	28	28	-	251,57 €
CT25-380/500	380/500	25	50	108	26	48	120	23	28	28	-	251,57 €
CT25-420/590	420/590	25	50	108	26	48	170	23	28	28	-	251,57 €
CT25-460/660	460/660	25	50	108	26	48	200	23	28	28	-	251,57 €
CT25-500/745	500/745	25	50	108	26	48	245	23	28	28	✓	251,57 €
CT30-320/390	320/390	30	58	122	30	50	70	26	32	32	-	342,33 €
CT30-350/420	350/420	30	58	122	30	50	70	26	32	32	-	342,33 €
CT30-370/455	370/455	30	58	122	30	50	85	26	32	32	-	342,33 €
CT30-400/510	400/510	30	58	122	30	50	110	26	32	32	-	342,33 €
CT30-450/620	450/620	30	58	122	30	50	170	26	32	32	-	342,33 €
CT30-500/720	500/720	30	58	122	30	50	220	26	32	32	-	342,33 €
CT30-540/795	540/795	30	58	122	30	50	255	26	32	32	-	342,33 €

*Depending on availability

Telescopic universal ball joint

CTH

With splined ball shaft

- Needle bearings
- Max. angle of misalignment 90°
- Materials:
Body: C45 steel
Pin: Hardened steel 18NCD4

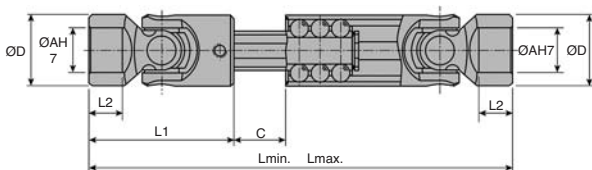


Uses

- High speed applications

Torque

- Please contact us to discuss your requirements



modifiable bore-size



DISCOUNTS

Qty.	1+	5+	10+	25+
Disc.	List	-6%	-12%	On request

Part number	Lmin-max	ØD	ØAH7	L1	L2	Stroke C	Price each 1 to 4
CTH20-184/209	184-209	40	20	72	14	25	346,50 €
CTH20-240/270	240-270	40	20	82	19	30	346,50 €
CTH20-224/259	224-259	40	20	97	19	35	346,50 €
CTH20-260/313	260-313	40	20	95	19	53	346,50 €

Universal joint cover

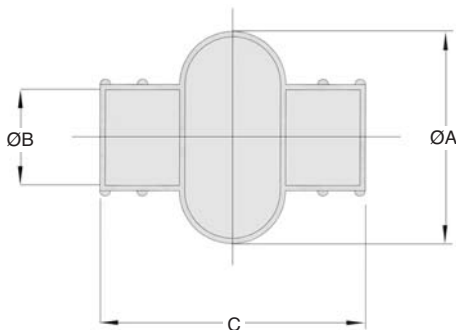
Industrial range

M

- Bellows for single joints
- For double joints, use two covers

Advantages

- The use of a cover can extend the operating life of a universal joint by 5 times



DISCOUNTS

Qty.	1+	5+	10+	25+
Disc.	List	-6%	-12%	On request

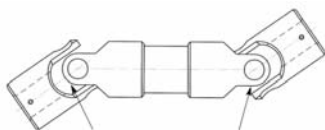
Part number	Joint bore-size (indication)	ØA	ØB	C	For universal joint n°	Stock*	Price each 1 to 4
M03-A-10	10	39	20,5	47	G03 GD03 H03 HD03	✓	7,94 €
M04-A-12	12	47	24,5	52	G04 GD04 H04 HD04	✓	7,94 €
M05-A-14	14	51	27,5	58	G05 GD05 H05 HD05	✓	7,94 €
M1-A-16	16	56	30,5	67	G1 GD1 H1 HD1	✓	8,70 €
M2-A-18	18	66	35,5	74	G2 GD2 H2 HD2	✓	8,70 €
M3-A-20	20	75	40,0	84	G3 GD3 H3 HD3	✓	12,42 €
M4-A-22	22	83	45,0	97	G4 GD4 H4 HD4	✓	12,42 €
M5-A-25	25	93	50,0	110	G5 GD5 H5 HD5	✓	13,48 €
M6-A-30	30	105	56,0	124	G6 GD6 H6 HD6	✓	13,48 €

*Depending on availability

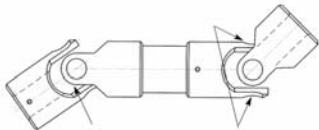
Use and maintenance of universal joints

Use and maintenance of universal joints

The yokes should be positioned as shown in the diagram in order to obtain an uniform movement.



Correct assembly
Yokes well-positioned



Incorrect assembly
Yokes badly-positioned

Maintenance of universal joints is limited to regular lubrication at least once a day.
In a dusty environment, using grease-filled joint covers is recommended.

Several rules should be followed for a universal joint to work correctly:

- It is rare for a single joint to be used alone. They are normally only used in manually operated systems.
- Assembly of two single joints (a double joint) allows speed irregularities of a single joint to be corrected by another joint exhibiting the same irregularities in the opposite direction. The transmission is said to be homocinetic.

2 single joints



for constant velocity movement, the two angles should be equal and in the same plane

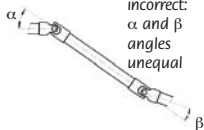


double joint

correct: α angles equal



Entry and exit shafts should be parallel



incorrect: α and β angles unequal

correct: A parallel to A'



incorrect: A not parallel to A'

correct: α symmetrical to α



Shafts should be guided by bearings as close to joint as possible to reduce radial loads.



incorrect: α not symmetrical to β